

Ref.: PMIAPCE093



Price: 330.000 €

City: Playa de Palma

Triplex apartment with elevator and sea views in Playa de Palma

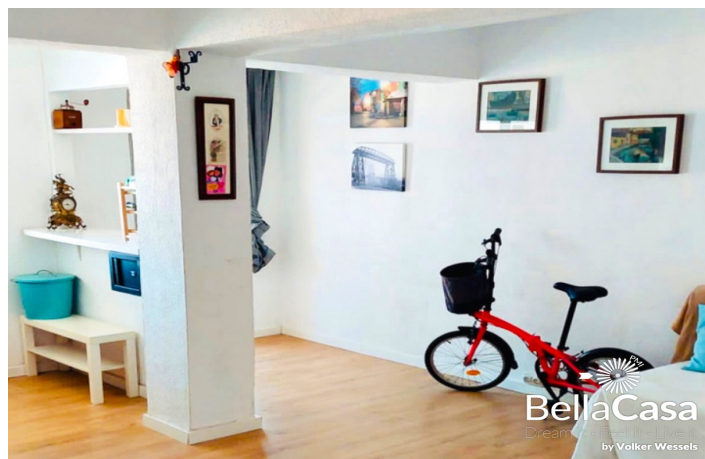
The 147 m2 triplex apartment offers views of the Mediterranean sea and is divided into three separately accessible residential units that are very advantageously designed.

Whether you are looking for a private residence for yourself or for a shared apartment or an ideal investment property - these 2 apartments, each with 2 bedrooms and bathroom, and the studio with bedroom and bathroom are virtually predestined and also have an elevator.

The long beach of Playa de Palma all the way to the Arenal marina is perfect for walks, bike rides and swimming, and the proximity to the International airport and the historic center of Palma makes it an ideal property.

Playa de Palma invites you to cozy bars, cafes and restaurants, shopping and entertainment.

Ref.: PMIAPCE093



Ref.: PMIAPCE093

